

LSC50

DISTRIBUTORI MODULARI LOAD SENSING LOAD SENSING DIRECTIONAL CONTROL VALVE LOAD-SENSING-SANDWICH-STEUERGERÄT

DATI TECNICI • TECHNICAL DATA • TECHNISCHE MERKMALE

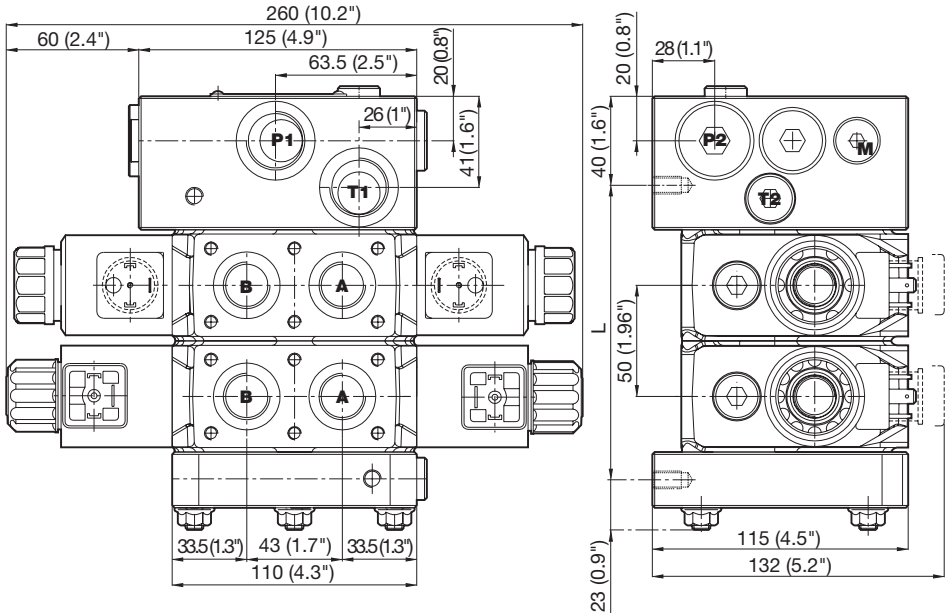
Portata nominale (max) <i>Nominal flow (max)</i>	90 (110) l/min 23.7 (29) gpm
Pressione massima <i>Maximum pressure</i>	250 (3646) bar (psi)
Contropressione massima allo scarico <i>Maximum tank pressure</i>	20 (290) bar (psi)
Massima trafilatura interna <i>Maximum internal leakage</i>	16 cc/min Maximale interne Leckage (33 mm ² /s - T=50° - 125 bar)
Temperatura d'utilizzo <i>Temperature range</i>	-20°C +80°C NBR seals Betriebstemperatur
Viscosità olio <i>Oil viscosity</i>	Da 10 cSt a 100 cSt From 10 cSt to 100 cSt
Viscosità <i>Ölviskosität</i>	von 10 cSt bis 100 cSt
Filtrazione <i>Filtration</i>	NAS 1638, class 10;
Filtrierung <i>Filtrierung</i>	ISO/DIS 4406, class 18/14
Fluido <i>Fluid</i>	Olio a base minerale Mineral based oil
Öl	Mineralöl

DIMENSIONI • SIZE • ABMESSUNGEN

MODELLO <i>MODEL</i> MODELL	L mm	MASSA Kg (lb) <i>WEIGHT Kg (lb)</i> GEWICHT Kg (lb)
LSC50-1	82.5	12 (26.4)
LSC50-2	132.5	16.5 (36.4)
LSC50-3	182.5	21 (46.3)
LSC50-4	232.5	25.5 (56.2)
LSC50-5	282.5	30 (66.1)
LSC50-6	332.5	34.5 (76)
LSC50-7	382.5	39 (86)
LSC50-8	432.5	43.5 (95.9)

FILETTATURA • THREAD • GEWINDE

CODICE <i>MODEL</i> BEZEICHNUNG	TIPO <i>TYPE</i> GEWINDE	CODICE <i>MODEL</i> BEZEICHNUNG	TIPO <i>TYPE</i> GEWINDE
P	3/4" Gas	Ls	1/4" Gas
T	3/4" Gas	M	1/4" Gas
A,B	1/2" Gas		



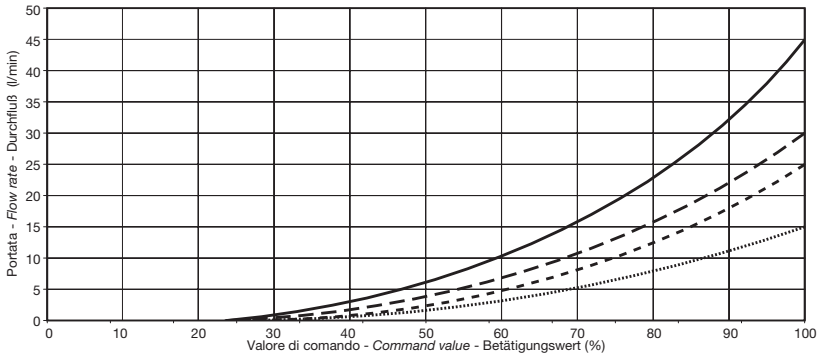


CURVE CARATTERISTICHE
FLOW CURVES
TYPISCHE KURVEN

P-A

CURSORE
SPOOL
SCHIEBER

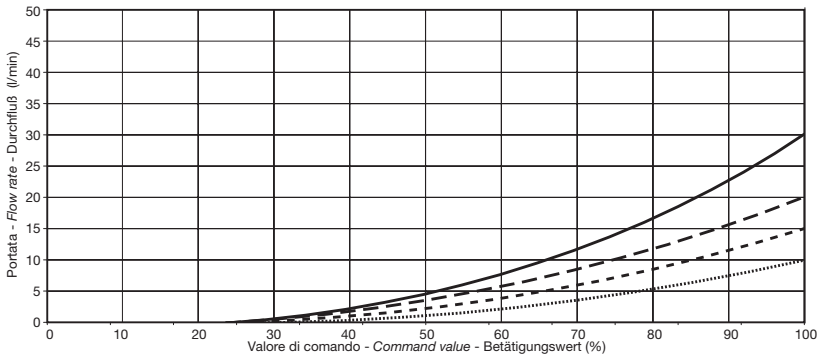
- 45/30 ———
- 30/20 - - - - -
- 25/15 - - - - -
- 15/10 ·····



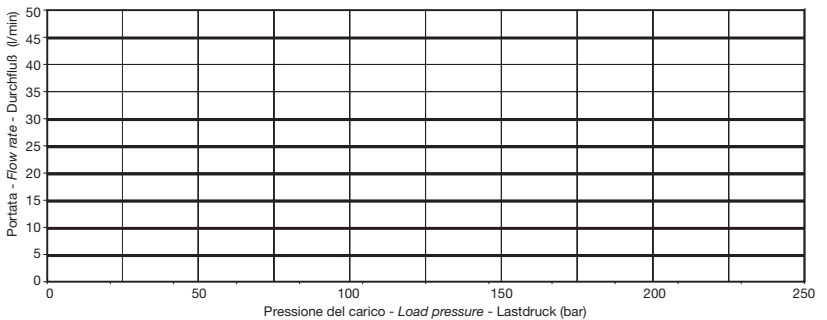
P-B

CURSORE
SPOOL
SCHIEBER

- 45/30 ———
- 30/20 - - - - -
- 25/15 - - - - -
- 15/10 ·····



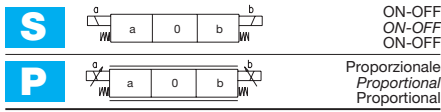
LOAD SENSING



Parametri di prova / Testing parameters / Prüfparameter: 50°C - 33 cSt

CIRCUITI E SCHEMI IDRAULICI
HYDRAULIC CIRCUITS AND SCHEMES
STEUERTYPEN UND HYDRAULISCHE SCHEMATA

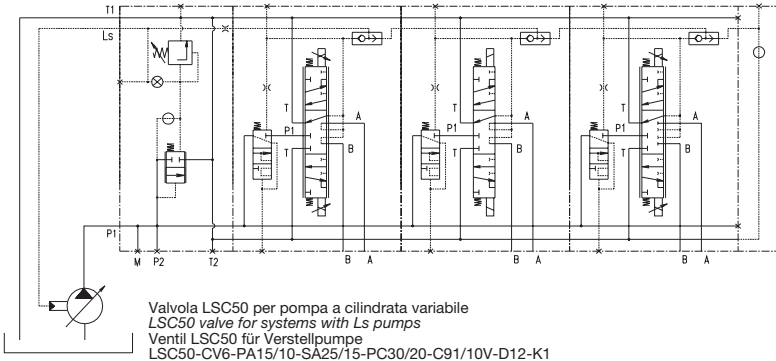
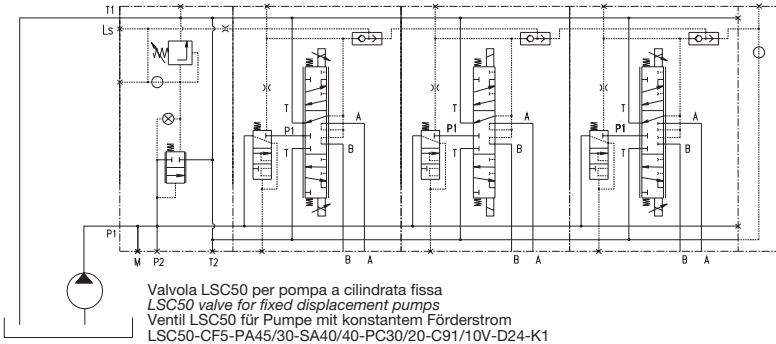
POSIZIONATORE • SPOOL CONTROL • SCHIEBERSTELLUNG



CIRCUITO • SPOOL TYPE • STEUERTYP

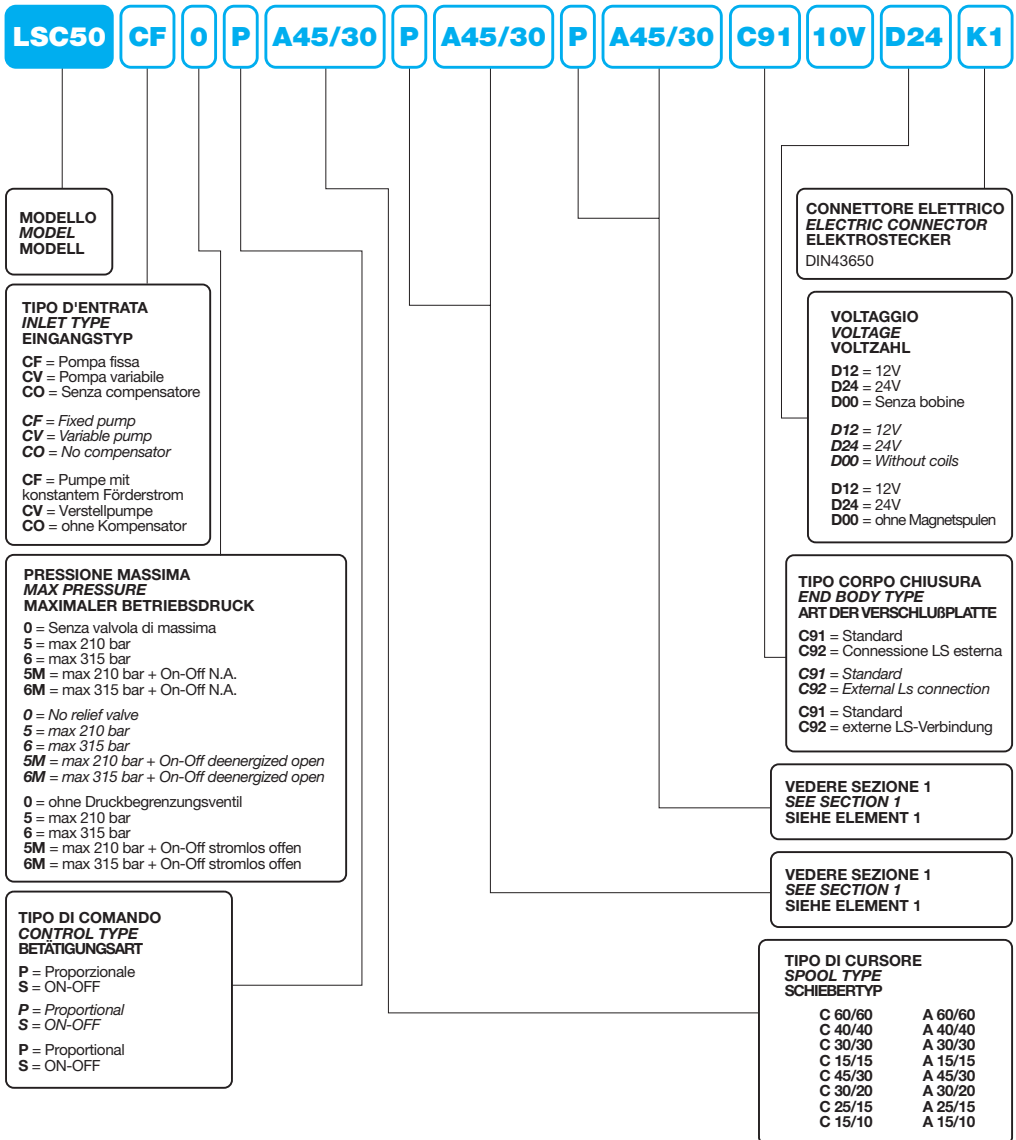
	POS. 3	POS. 1	POS. 0	POS. 2	POS. 4
C		P → B A → T	P → T A → B	P → A B → T	
A		P → B A → T	A, B → T P → T	P → A B → T	

SISTEMI IDRAULICI POSSIBILI REALIZZATI CON LSC50
HYDRAULIC CIRCUIT DIAGRAM SHOWING BASIC FUNCTIONS FOR LSC50
MÖGLICHE HYDRAULIKSCHEMATA FÜR LSC50





**ISTRUZIONI PER L'ORDINAZIONE
ORDERING INSTRUCTIONS
BESTELLANLEITUNG**



Notare: non dirigere getti d'acqua direttamente sulla valvola.
Note: do not wash the valve with direct water jet.
Bitte beachten: Steuergerät/Ventil nicht mit Hochdruckreiniger waschen.